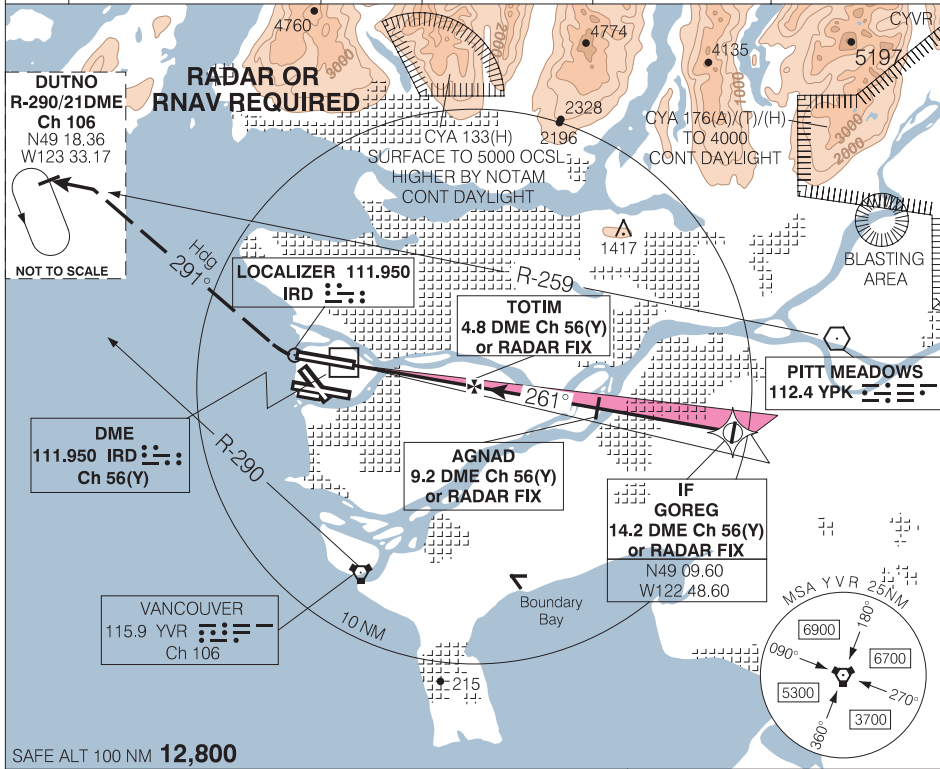
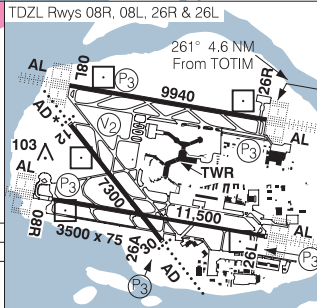
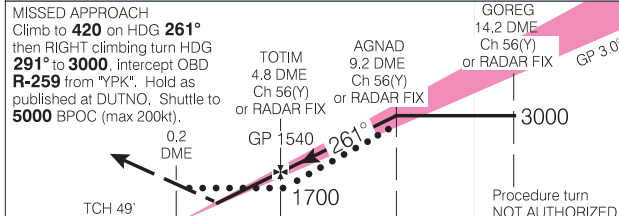


ILS/DME or ILS/RADAR RWY 26R

ATIS 124.6	ARR 128.6/128.17 (Outer) 133.1 134.225 (Inner) 352.7	TWR 119.55(N) 226.5	GND 121.7(S) 127.15(N) 275.8	DEP 126.125(N) 132.3(S) 363.8	ELEV 14 TDZE 26R 9
---------------	--	---------------------------	------------------------------------	-------------------------------------	-----------------------



SAFE ALT 100 NM **12,800**



CATEGORY	A	B	C	D
ILS/DME ILS/RADAR	209	(200)	½ RVR 26	
LOC/DME LOC/RADAR	520	(511)	1 RVR 50	
CIRCLING	640 (626) 2	700 (686) 2	720 (706) 2 ¼	780 (766) 2 ½

TOTIM to MAP 4.6 NM

Knots	70	90	110	130	150
Min:Sec	3:56	3:04	2:30	2:07	1:50

ILS/DME or ILS/RADAR RWY 26R

491141N 1231102W

VAR 19°E