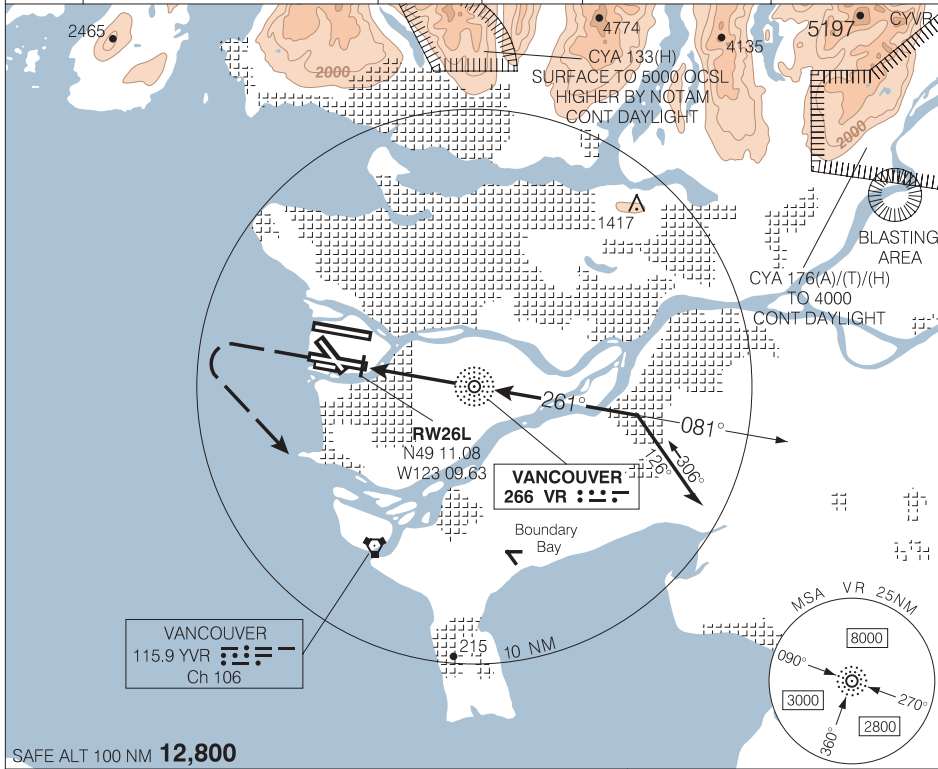


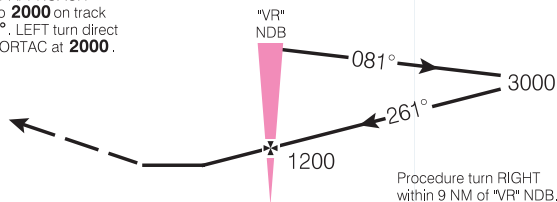
NDB RWY 26L (GNSS)

ATIS 124.6	ARR			TWR 118.7(S) 226.5	GND 121.7(S) 275.8	DEP 126.125(N) 132.3(S) 363.8	ELEV 14
	128.6/128.17 (Outer)	134.225 (Inner)	352.7				TDZE 26L 7

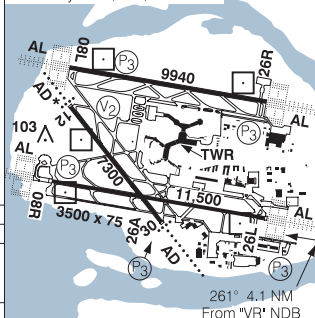


SAFE ALT 100 NM **12,800**

MISSED APPROACH  
Climb to **2000** on track of **261°**. LEFT turn direct "YVR" VORTAC at **2000**.



TDZL Rwy's 08R, 08L, 26R & 26L



CATEGORY	A		B		C		D	
NDB	<b>580</b>		(573)		1 ¼			
CIRCLING	<b>640</b> (626)	<b>700</b> (686)	<b>720</b> (706)	<b>780</b> (766)	2	2 ¼	2 ¼	2 ¼

261° 4.1 NM From "VR" NDB

"VR" NDB to MAP 4.1 NM					
Knots	70	90	110	130	150
Min:Sec	<b>3:31</b>	<b>2:44</b>	<b>2:14</b>	<b>1:54</b>	<b>1:38</b>

NDB RWY 26L (GNSS)

491141N 1231102W

VAR 19°E

VANCOUVER BC  
VANCOUVER INTL