

SID (VECTOR) non-JET-AIRCRAFT
RICHMOND ONE DEP (RICHM 1.)

VANCOUVER INTL
 VANCOUVER BC

ATIS 124.6
CLNC DEL 121.4
GND 121.7(S) 127.15(N)
275.8
TWR 118.7(S) 119.55(N)
226.5
DEP 132.3(S) 363.8

- 1. THIS PROCEDURE IS FOR NON-JET AIRCRAFT ONLY.**
- 2. DO NOT EXCEED 165 KTS IN CLIMB UNTIL IN CONTACT WITH DEP CONTROL AND PASSING 4000' ASL.**
- 3. NO TURNS BELOW 500' ASL.**

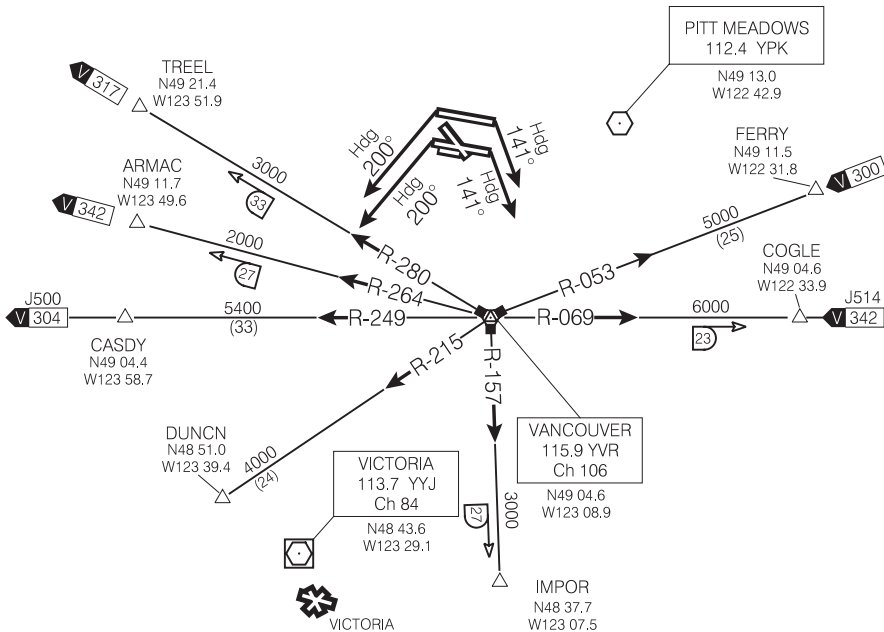


Chart not to scale

**DEPARTURE ROUTE DESCRIPTION
 (NON-JET-AIRCRAFT ONLY)**

Runway 08L & 08R: At 500' ASL turn **RIGHT** to climb on **heading 141°** or as assigned by ATC. Contact Departure Control after passing 1000' ASL unless instructed otherwise by ATC. Maintain 2000' ASL or as assigned. Expect radar vectors to filed/assigned route or depicted FIX, and clearance to flight planned altitude/flight level 10 minutes after departure.

Runway 26L & 26R: At 500' ASL turn **LEFT** to climb on **heading 200°** or as assigned by ATC. Contact Departure Control after passing 1000' ASL unless instructed otherwise by ATC. Maintain 2000' ASL or as assigned. Expect radar vectors to filed/assigned route or depicted FIX and clearance to flight planned altitude/flight level 10 minutes after departure.

Lost Communications: If no radio contact with Departure Control by published/assigned altitude maintain assigned altitude until 5 minutes after departure; then, proceed on course and climb to flight planned altitude.

NOTE: Refer to Noise Abatement Procedures for additional requirements.

RICHMOND ONE DEP (RICHM 1.)

VANCOUVER BC
 VANCOUVER INTL