

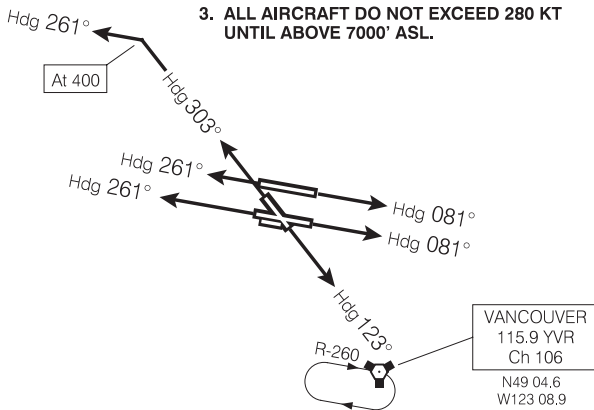
SID (VECTOR)

VANCOUVER FOUR DEP (YVR 4.)

VANCOUVER INTL
VANCOUVER BC

ATIS 124.6
CLNC DEL 121.4
GND 121.7(S) 127.15(N)
275.8
TWR 118.7(S) 119.55(N)
226.5
DEP 126.125(N) 132.3(S)
363.8

1. JET ACFT USE VNAP A
2. NON-JET ACFT DO NOT EXCEED 165 KT IN CLIMB UNTIL IN CONTACT WITH DEP CONTROL AND PASSING 4000' ASL.
3. ALL AIRCRAFT DO NOT EXCEED 280 KT UNTIL ABOVE 7000' ASL.



MAINTAIN 7000' ASL.



Chart not to scale

DEPARTURE ROUTE DESCRIPTION

All Rwys: Maintain 7000' ASL or as assigned by ATC. Expect vectors to filed/assigned route and clearance to flight planned altitude/flight level 5 minutes after departure. Contact Departure Control after passing 1000' ASL unless instructed otherwise by ATC.

Rwys 08R, 08L: Climb on **Hdg 081°** or as assigned by ATC.

Rwy 12: Climb on **Hdg 123°** or as assigned by ATC.

Rwys 26R, 26L: Climb on **Hdg 261°** or as assigned by ATC.

Rwy 30: Climb on **Hdg 303°**. At 400' ASL turn LEFT **Hdg 261°** or as assigned by ATC.

NOTE: Refer to Noise Abatement Procedures for additional requirements.

COMMUNICATION FAILURE

Rwys 08R, 08L: On recognition of failure 5 minutes or less after take-off, below 7000' ASL and in IFR weather conditions, proceed as follows:

1. Select transponder mode C/3 code 7600
2. Beyond 10 DME of "YVR" VORTAC maintain last assigned altitude, turn RIGHT direct to "YVR" VORTAC. Hold inbound R-260, right turns.
3. Proceed on course 5 minutes after selecting 7600 and climb to flight planned altitude.

Rwys 12, 26R, 26L, 30:

1. Select transponder mode C/3 code 7600
2. Proceed on course 5 minutes after selecting 7600 and climb to flight planned altitude.

VANCOUVER FOUR DEP (YVR 4.)

VANCOUVER BC
VANCOUVER INTL