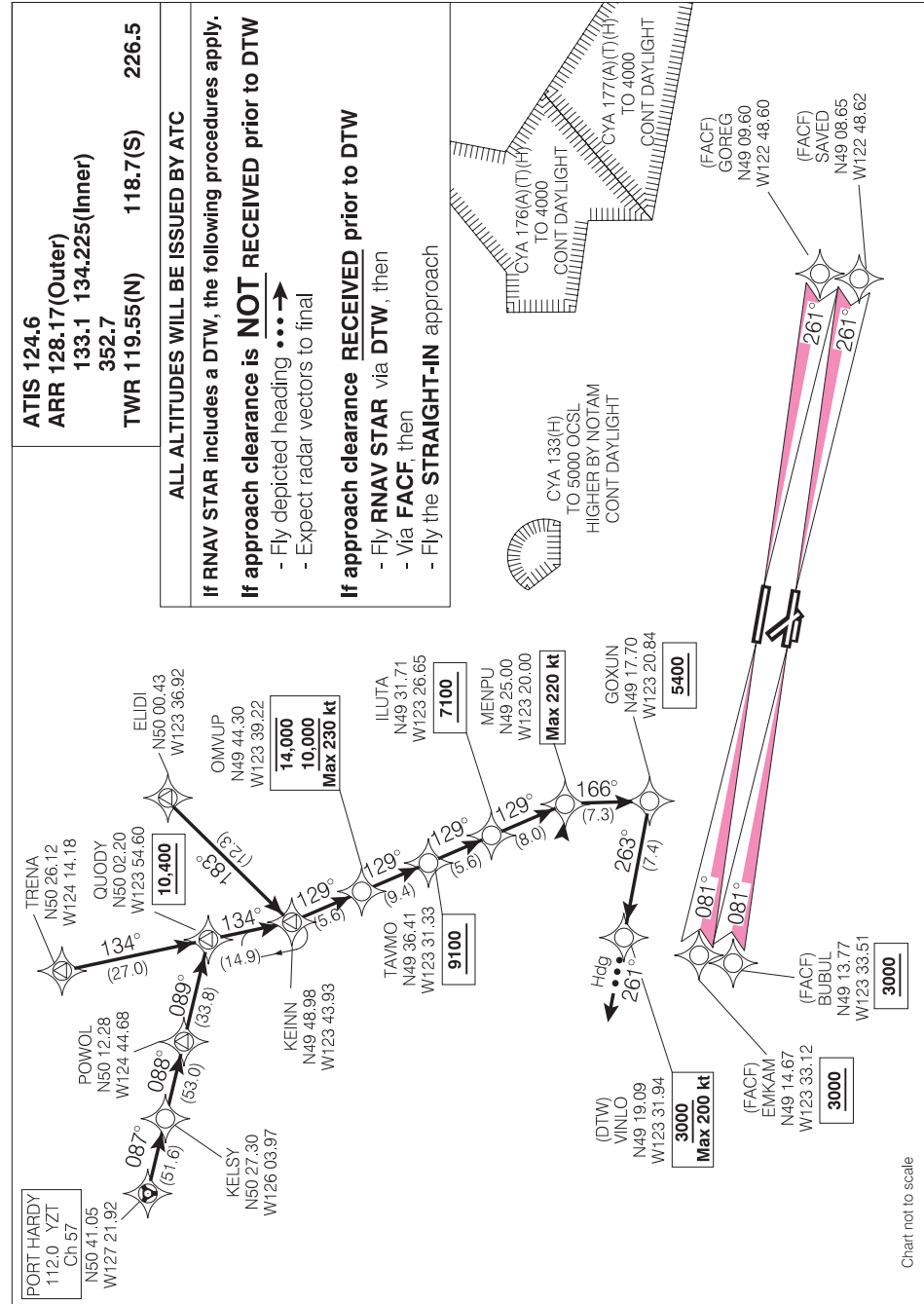


STAR (RNAV) RWYS 08L & 08R
WHISTLER TWO ARR (KEINN.WHSLR 2)

VANCOUVER INTL
 VANCOUVER BC



Source of Canadian Civil Aeronautical Data : © 2009 NAV CANADA. All rights reserved

Chart not to scale

WHISTLER TWO ARR (KEINN.WHSLR 2)

VANCOUVER BC
 VANCOUVER INTL

STAR (RNAV) RWYS 26L & 26R
WHISTLER TWO ARR

(KEINN.WHSLR 2)

VANCOUVER INTL
 VANCOUVER BC

ALL ALTITUDES WILL BE ISSUED BY ATC

If RNAV STAR includes a DTW, the following procedures apply.

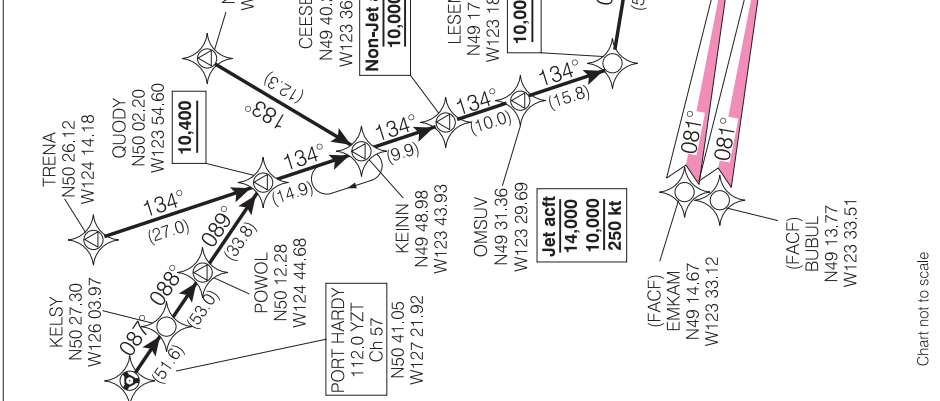
If approach clearance is NOT RECEIVED prior to DTW

- Fly depicted heading $\bullet\bullet\bullet\rightarrow$
- Expect radar vectors to final

If approach clearance RECEIVED prior to DTW

- Fly RNAV STAR via DTW, then
- Via FACP, then
- Fly the STRAIGHT-IN approach

ATIS 124.6
ARR 128.17(Outer)
133.1 134.225 (Inner)
352.7
TWR 119.55(N) 118.7(S)
226.5



Source of Canadian Civil Aeronautical Data : © 2009 NAV CANADA All rights reserved

Chart not to scale

WHISTLER TWO ARR (KEINN.WHSLR 2)

VANCOUVER BC
 VANCOUVER INTL